

THE : FUTURE : LABORATORY  
: : 2019  
: : 26 ELDER STREET  
: : LONDON E1 6BT

# Hire of our Elder Street premises

We are delighted to offer our clients and friends the opportunity to hire our Elder Street home. Previously, the space has been used for client workshops, networking events, product launches and parties, and for one month it was turned into the world's most forward-thinking Sweet Shoppe, the prototype for our Selfridges Fragrance Lab.

The spaces available for hire include our beautiful Vertical Garden and Courtyard, the Undercroft, the Basement (formerly used as a tea lab, spice market and East End speakeasy), the Workshop (which can accommodate up to 50 people, theatre-style), our Meeting Room, Bee Terrace and Ground Floor 28, a monochrome-inspired sitting room, with seed garden and sun patio.

If you require further information or a quotation for your event, please do not hesitate to contact:

**Millie Carter Phillips**

Office manager

[millie@thefuturelaboratory.com](mailto:millie@thefuturelaboratory.com)

020 7791 2020

**Philip Franklin-Slattery**

Head of events

[philip@thefuturelaboratory.com](mailto:philip@thefuturelaboratory.com)

020 7791 2020





# Areas



## The Vertical Garden and Courtyard :

Our garden, which is partially covered, is managed all year round by head gardener Nigel Marlow, aka The Spitalfields Gardener. It is very much a working space, with seasonal produce available during harvest periods. It is ideal for pre- and post-presentation hospitality – British weather permitting



## The Canteen :

Our fully functional canteen is complete with full-size kitchen, six-ring stove and oven, sink, compact dishwasher, fridge and pantry. Up to 18 guests can be accommodated for a seated lunch or dinner. Original artwork adorns the walls – a series of images known as Butterfly by artist Richard Wilson and photographer Peter Marlow



## The Workshop :

A wrought iron staircase connects the Vertical Garden and Courtyard to the Workshop. This space is ideal for the more formal aspects of your event – presentations, forums and seminars. It seats 50, theatre-style, with a small anteroom/lobby off to the side. In situ is an Epson projector with amplification and sound, plus lectern and seating



# Areas

04



## The Waiting Room :

Located in the heart of our building, our reception area is an enlightening space filled with a curated collection of texts. The space encourages visitors to re-engage with the printed page and unplug for a moment. Many clients use this space to wait, listen, meditate or plan their next big business adventure

05



## Ground Floor 28 :

It sounds ominous, but this is one of our cosiest meeting rooms that backs on to our seed garden and walled patio. Here you can enjoy cakes, Cornish teas, and if the mood is right, an occasional glass of Laurent-Perrier bubbly (our house pour), a White Negroni (yes, we're always ahead of the curve here) or an Aperol Spritz

06



## The Undercroft :

Connected to the Vertical Garden and Courtyard, the Undercroft is an ideal area to use as a blank canvas for installations, product demonstrations and immersive experiences. It can either be used as part of your event elsewhere in the building or as a location for a stand-alone, must-see installation.



# Areas

07



## The Meeting Room :

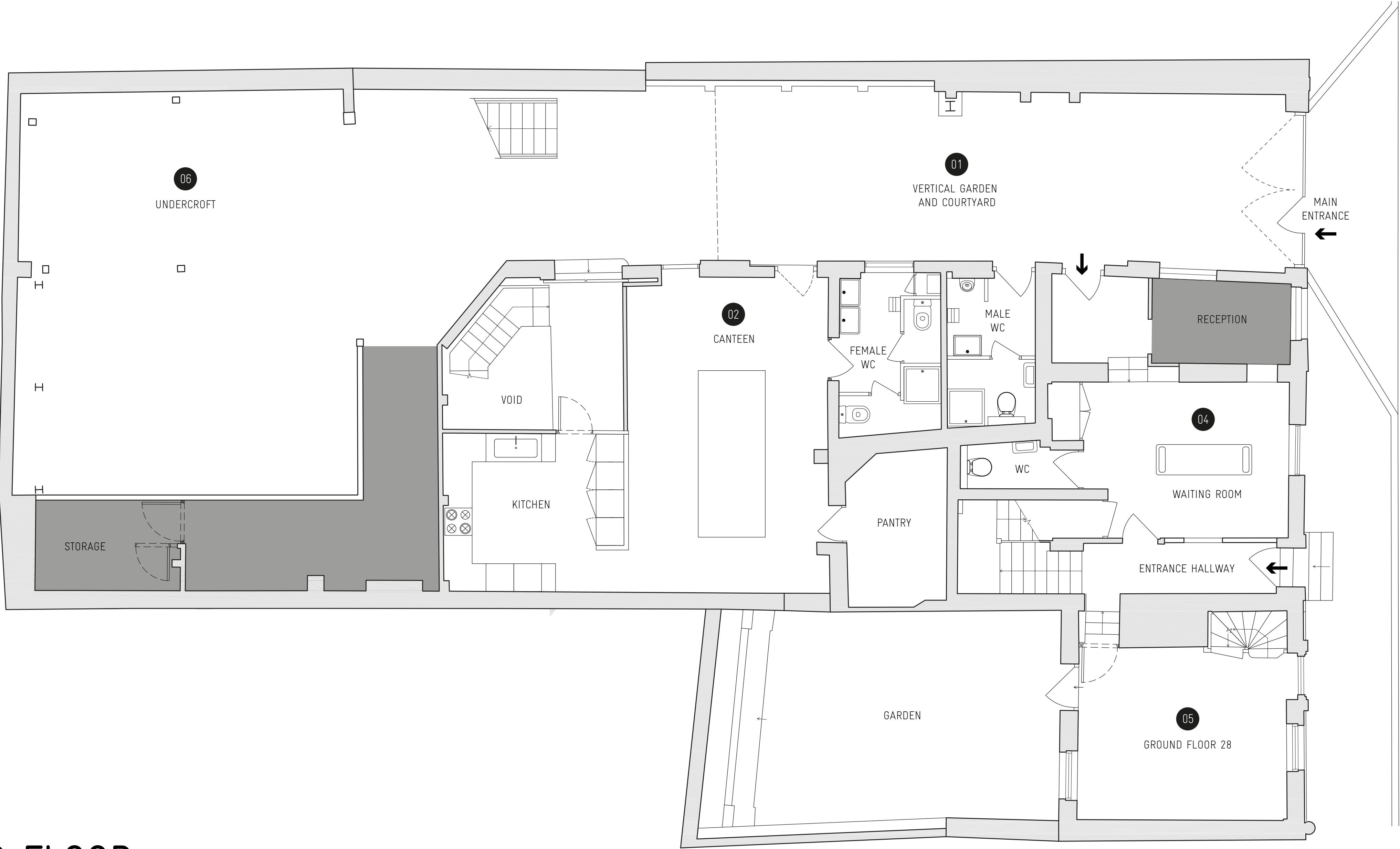
Or the Un-Bored Room, as we tend to call it. Mainly because we like meeting there and love having a chance to sit in a retro room that reminds us how the future must have looked when people in the past were dreaming about it. There is a big tv screen here, space for eight, oodles of tea, coffee (organic? Yes, dully so) and hand-baked The Future Laboratory biscuits. Oh, and if you like freshly baked madeleines, bread and wine, let us know and we can have the boys at St John send some round

08



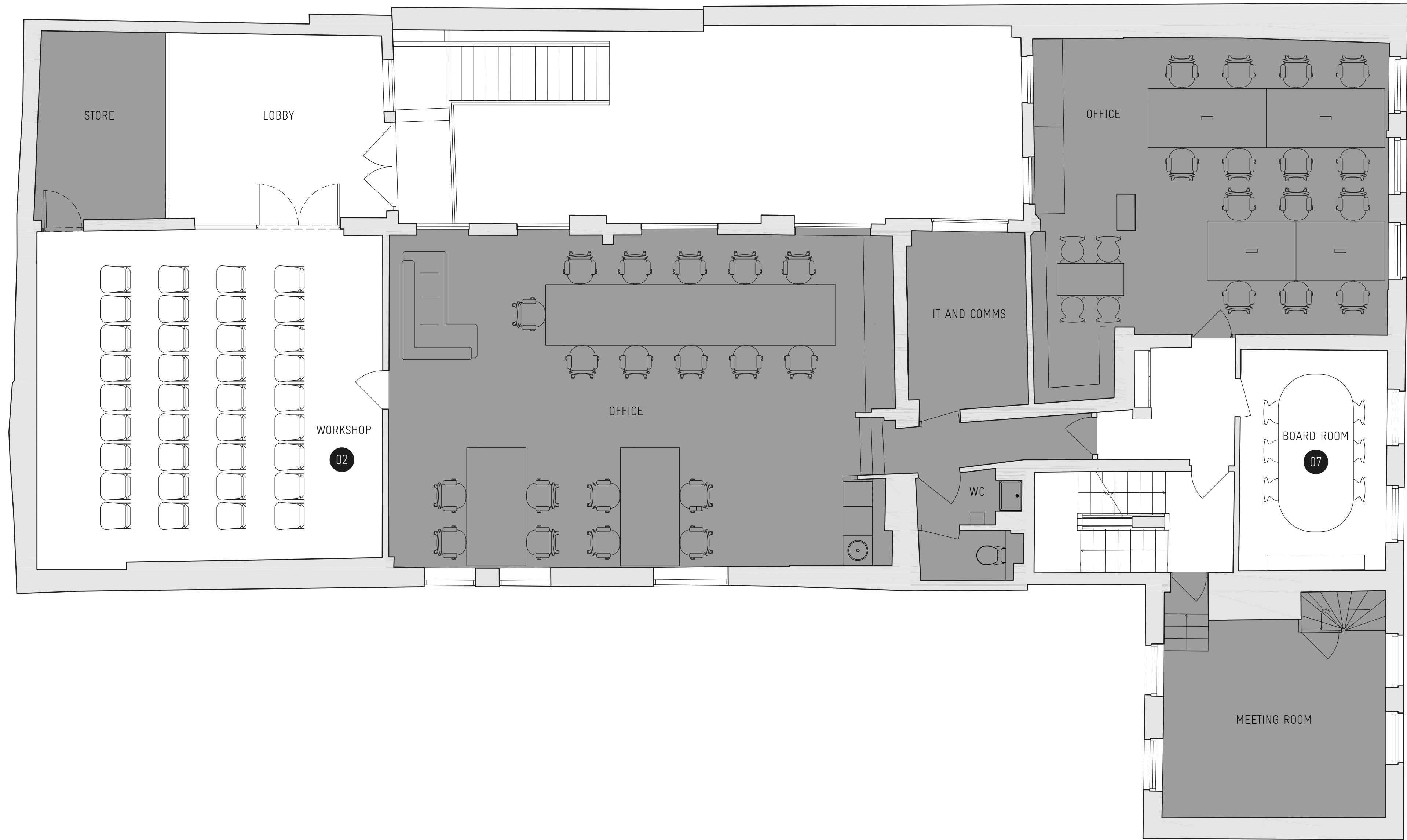
## The Basement :

Go down our spiral staircase and you are in our Basement Tea Lab. Or is it a lunar spice market, a speakeasy called the Starry Garter or our Trend Futures Impossibility Room? Either way, it is connected to our Canteen so you can have tea, coffee, locally sourced foods or honey from our Bee Terrace soaked on bread brought down to you. You can also dip in to The Future Laboratory cellar when your mood and meeting requires it – it contains bottles of champagne and wines from Britain, France, Australia and South Africa for you and your guests to choose from

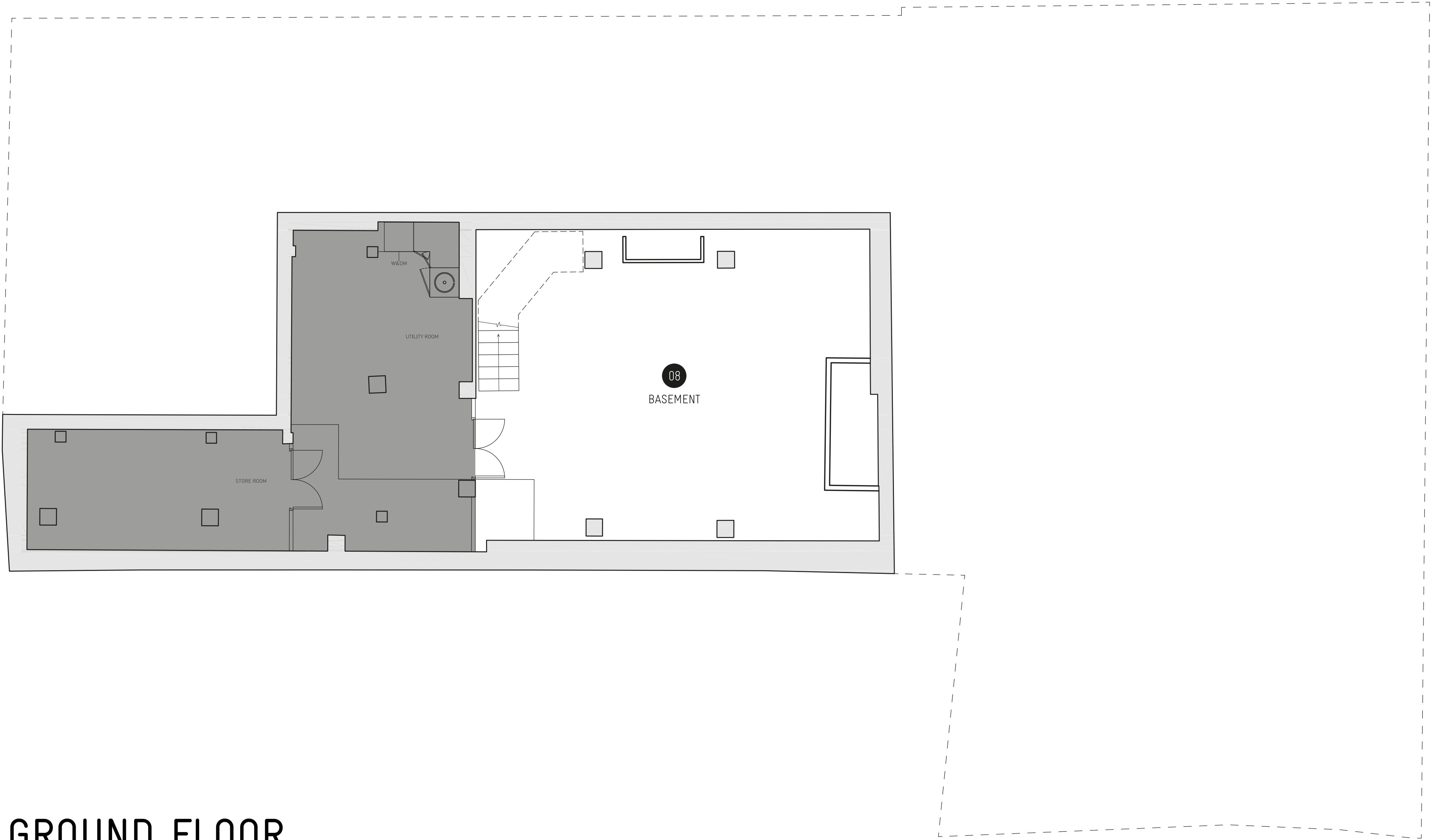


GROUND FLOOR





FIRST FLOOR



LOWER GROUND FLOOR



# Hire Fees

**Workshop/Canteen/Courtyard**

Half day: £1,450 excluding VAT  
Full day: £2,900 excluding VAT

**The Meeting Room**

Half day: £500 excluding VAT  
Full day: £750 excluding VAT

**The Basement**

Half day: £500 excluding VAT  
Full day: £750 excluding VAT

**The Undercroft**

Half day: £750 excluding VAT  
Full day: £1,100 excluding VAT

**Ground Floor 28 and Garden**

Half day: £500 excluding VAT  
Full day: £750 excluding VAT

All costs are dry hire and office hours only. Please enquire about out of office hour events as well as catering

